

An aerial photograph of the De Montfort University Leicester campus, showing modern buildings with large glass windows and green spaces. The image is overlaid with a large, semi-transparent graphic of the university's lion logo.

Your complete guide to applying to university

Contents

Why go to university – and why DMU?	2
Find the right course for you	4
How to apply	7
Personal statement guidance	8
Student finance	10
Student support	12
Get hired	14
Guaranteed accommodation	16
Parents and carers	20
Clearing	22
Uni terms explained	24
UCAS tariffs explained	25
Your journey to DMU	26



Applicant guide

Our applicant guide is more than just a how-to, it's your go-to resource for everything from choosing the right university and course to understanding finance, scholarships, and results day.

Inside, you'll find an easy guide for every step you need to take:

- How to apply and crafting a standout personal statement
- Navigating results day with confidence
- Understanding accommodation costs and funding options
- Keeping track of key timings

We've included important updates on the latest personal statement requirements, plus a section just for parents and carers to stay informed and involved.

Whether you're still deciding where to apply or finding the right course for you, this guide will answer your most common questions and help you take the next step.



Why go to university – and why DMU?

Make a real investment in your future

A university degree can boost your career prospects, increase earning potential, and open up opportunities you may not have considered. It's not just about gaining knowledge, it's about setting yourself up for long-term success.

It's important to start exploring early and think carefully about what matters most to you – from the subject you enjoy to the career you want to pursue.

Best in the UK for work experience

Whether you want to be a nurse, a lawyer, an entrepreneur or you're not sure yet – we'll help you become the type of graduate employers are looking for. Our students voted us the best in the UK for work experience (RateMyPlacement 2024 & 2025). DMU also saw an increase in the number of graduates gaining full-time employment, prompting a 31-place rise in the related national rankings (Higher Education Statistics Agency).

The game changer – block teaching

DMU is one of the few places in the UK to offer block teaching where you'll focus on one subject at a time, achieve deeper learning and better results. Rather than lots of exams all at once, our approach provides you with more regular feedback and no end of term exams.

Award-winning Careers Team

DMU places employability at the heart of your education with our sector-leading Careers Team support and guaranteed work experience opportunities for every student.

Gain skills that set you apart

Our courses are designed with employability in mind and come with guaranteed work experience opportunities, helping you build the transferable skills, confidence and experience that employers value.

Industry links

Many of our courses are co-designed with employers to keep content relevant and up-to-date.

Leading sustainability

As the Chair of a United Nations' global hub for sustainable cities and communities – and the only UK university to be a hub Chair – we focus on making a difference locally and globally, and you can be part of shaping a more sustainable future.

Global university

With our international opportunities and campuses around the world, you can take your learning beyond the classroom and travel and study abroad.



Scan to visit our home page



Finding the right course for you

At DMU, we offer over 120 courses across a wide range of subjects from business management, nursing, architecture, computing and law. Whether you're passionate about the arts, science, or a more vocational route, there's something here for you.

Choosing the right course is a big step but with research and support you'll find the right fit for you.

What to consider when choosing a course:

- **Your interests and strengths:** What subjects do you enjoy? What are you naturally good at?
- **Career goals:** Does your dream job require a specific qualification or set of skills?
- **Course content:** Not all degrees are the same. Look at modules, assessment methods and opportunities for work placements.

- **Compare different universities:** The same subject can vary a lot and Open Days are a great way to explore your options. Whether you're chatting with academics, joining a taster session, or speaking to current students, you'll get a real feel for the subject.

Think about where the course could take you – ask about career prospects, placements, and graduate destinations. And remember, the right course is one that excites you and supports your goals.

- **Teaching style:** Would you prefer hands-on learning, creative projects or more traditional lectures?
- **Accreditation and employability:** Many DMU courses are professionally accredited, giving you a head start in your chosen industry.



Scan to find your course




Book onto our next open day



Play our game DMUverse!



How to apply

<p>Step 1</p>	<p>Research and find the course you like most</p> <p>Use sites like UCAS, Unifrog, The Student Room, UniCompare or university websites to look at prospectuses. If you want to get a flavour of uni life check out our social media too.</p>	
<p>Step 2</p>	<p>Starting writing your personal statement</p> <p>A strong personal statement is crucial to showcase your skills, passions and reasons for applying.</p>	
<p>Step 3</p>	<p>Come to an Open Day</p> <p>Visit one of our Open Days – this is the best way to get first-hand experience of what it's like to study at DMU.</p>	
<p>Step 4</p>	<p>Apply online via UCAS</p> <p>Applications open on the UCAS website in September and you can apply for up to five courses. Submit your application by January for most courses/universities.</p>	
<p>Step 5</p>	<p>Receive your offers</p> <p>You'll be notified of decisions via UCAS Hub by the end of May. If you do not receive any offers, or want to change your choices, visit UCAS Extra between February and July.</p>	

Get in touch with us if you have any questions about applying to university – we're more than happy to help. Email us at enquiry@dmu.ac.uk or send us a WhatsApp on **07970 655 800**.





Personal statement guidance

Let's look at how you can approach your statement to really stand out and demonstrate your skills and qualities.

What to expect:

Three questions: There will be three questions to help you structure your statement and showcase your achievements and suitability for the course. This format ensures that you cover all the key points we want to see.

Character count: Each answer has a minimum character count of 350 characters. Across all responses it has a character limit of 4,000.

How to approach each question:

Each question is designed to help you reflect on different aspects of your experience and motivations. Here's a breakdown of how to tackle each one effectively:

1. Why do you want to study this course?

Show your passion and motivation. Share what inspired your interest (a person, event, or experience) and demonstrate your knowledge with examples from outside the classroom (books, videos, personal research). Link it to your future goals and how this course fits into your plans.

2. How have your studies prepared you?

Talk about relevant subjects or qualifications and the skills you've gained (like teamwork, communication or analysis). Mention achievements, projects or activities that show your strengths and readiness for university-level study.

3. What have you done outside of education to prepare?

Include work experience, volunteering, hobbies, or personal challenges that helped you build skills like resilience, leadership, or organisation. If you're not currently in education, explain how your recent experiences have prepared you for this next step.



For more information and support on personal statements, visit our hub to find advice to help your journey.



Student finance

This is your go-to resource for a financially smooth start to university life.

Tuition Fee

What does your tuition fee cover?

- All teaching (lectures, seminars, workshops, etc.)
- Teaching staff (academics, researchers, technicians etc.)
- Course admin fees
- Access to facilities (labs, studios, workshops etc.)
- Libraries, study equipment and IT facilities
- Support services
- Student Union membership
- ... and much more!

Tuition Fee Loan

Most students who go to university in the UK will apply for a Tuition Fee Loan from the government to cover the cost of tuition. Here are some key facts about the Tuition Fee Loan:

- It's paid by the government directly to the university, so it only covers the university tuition fees and none of your cost of living expenses.
- You need to meet the eligibility criteria. Find out what they are at www.gov.uk/student-finance. This is also where you apply for the loan.
- The loan does not affect credit score or ability to get future loans and mortgage.
- The loan cannot be passed on or inherited.

How do you pay it back?

- You only start to pay back the money once you earn above a set threshold (currently £25,000 per year), and your repayments are based on how much you earn.
- You'll repay 9% of the income you earn over the threshold. See the table below to see how much you could be paying back.
- If you ever fall below the threshold after starting to repay your loan, your payments stop automatically.
- If you don't pay off your loan in full within 40 years, the remainder will be cancelled.

Cost of living

Students cover their cost of living expenses – such as accommodation, food, and travel – in several ways. Some receive financial support from parents, take on a part-time job, or apply for a Maintenance Loan.

Maintenance Loan

This is paid directly to your bank account in three instalments each year. The loan is means-tested, meaning that it's based on your household income. Visit the Student Finance website to see how much you could borrow. You have to pay this loan back under the same rules as the Tuition Fee Loan. After you graduate, both loans will be consolidated into one amount.

Maintenance Loan Chart 2025-2026

Household income range	Staying at home	Living away from home
£25,000 or less	£8,877	£10,544
£25,001–£30,000	£8,132	£9,791
£30,001–£35,000	£7,387	£9,038
£35,001–£40,000	£6,642	£8,285
£40,001–£45,000	£5,897	£7,532
£45,001–£50,000	£5,152	£6,779
£50,001–£55,000	£4,407	£6,026
£55,001–£60,000	£3,907	£5,273
£60,001+	£3,907	£4,915

*Finance information is correct as of 11/09/2025.



Scan to learn more about student finance



Student support

We want to make sure you have the information you need to take control of your finances and offer support, advice and guidance to help you manage your money.

Student Finance

Our Student Finance team offers a range of online resources to help you manage your finances, as well as in-person meetings where you can get confidential advice and guidance.

DMU scholarships and bursaries

DMU offers a number of scholarships and bursaries to our students.

Government scholarships and bursaries

Scholarships and bursaries are free pots of money you don't have to pay back. As well as ones awarded by the university, there are extra ones you can apply for if you are care leaver, parent, on a low income or studying a specific subject like an NHS course, social work or teaching.

Disabled Students' Allowance (DSA)

DMU Disability team can help with understanding what kinds of things you can get through your DSA that will be specific to your needs, so make sure to speak with them, even this you think you don't need anything.

DSA is a grant based solely on your needs to help pay any extra essential costs as a direct result of your disability, which includes mental health conditions, or

specific learning difficulty such as dyslexia. It can go towards human support, assistive technology, travel costs, etc. and is not required to be paid back.



Scan to learn more about scholarships and bursaries



Get hired

Graduate career-ready with award-winning support

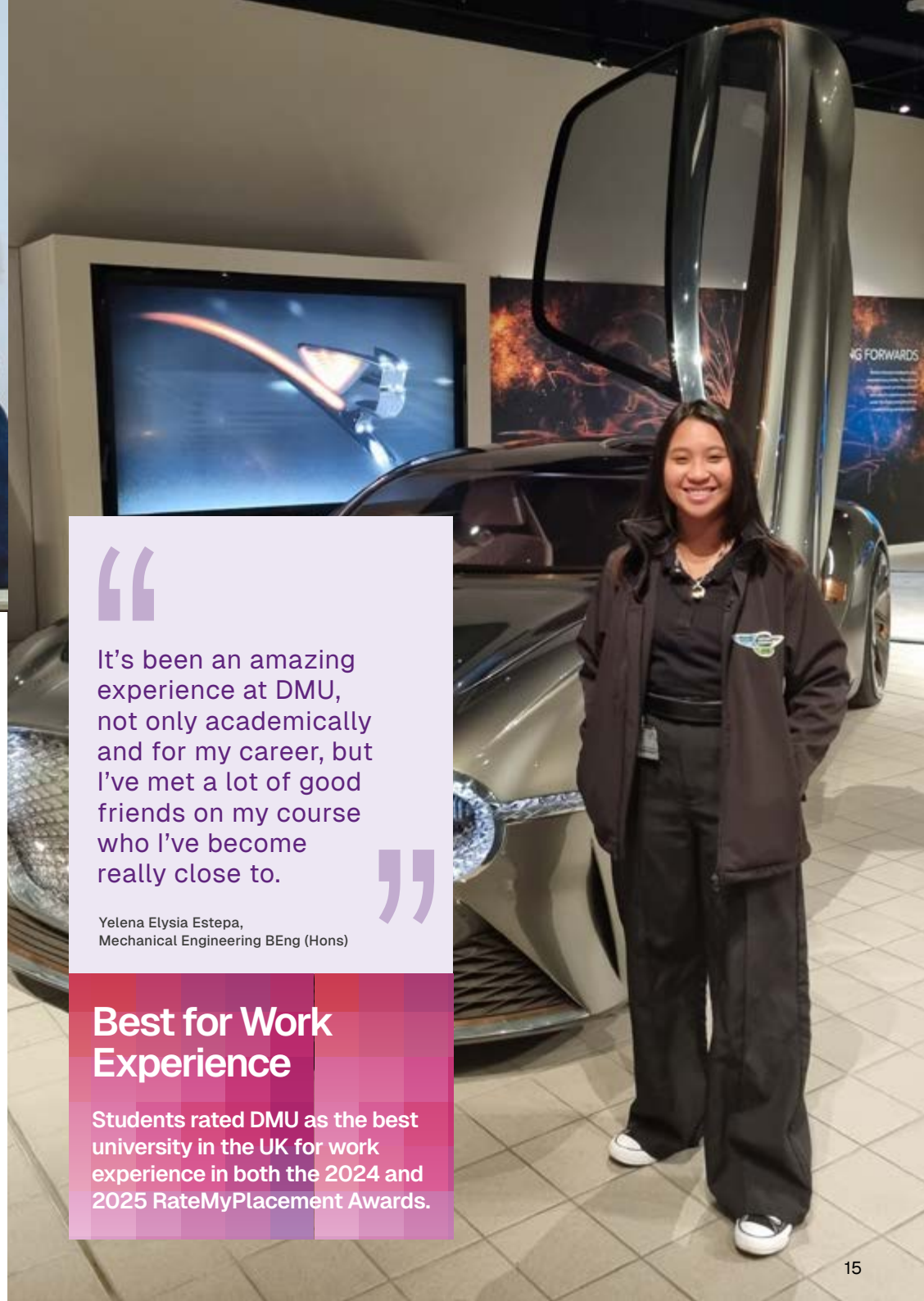
At DMU, graduating means more than just passing assessments, it's about preparing for the world of work from day one. Our award-winning Careers Team is here to support you every step of the way, with one-to-one coaching, immersive interview practice using virtual reality, CV workshops, bootcamps, and employer-led events.

You'll have access to guaranteed work experience opportunities, strong industry links with global brands like Microsoft, Disney and ASOS, and the chance to earn while you study through our on-campus agency, Unitemps.

Ranked a top 20 UK university for employability and named Best University for Work Experience two years running (RateMyPlacement 2024 & 2025), we're proud to be shaping the career-ready graduates employers want.



Scan to learn about our careers team



“

It's been an amazing experience at DMU, not only academically and for my career, but I've met a lot of good friends on my course who I've become really close to.

”

Yelena Elysia Estepa,
Mechanical Engineering BEng (Hons)

Best for Work Experience

Students rated DMU as the best university in the UK for work experience in both the 2024 and 2025 RateMyPlacement Awards.



Guaranteed accommodation

Moving into your own place for the first time is a big step and choosing the right accommodation can make all the difference to your university experience.

No matter where you go to university, your accommodation plays a big role in shaping your experience. At DMU, we're proud to offer modern, secure, and sociable living spaces to help you settle in and thrive from day one.

What to think about?

Look out for: location, safety, social life, the facilities on offer and, of course, feeling comfortable and supported. Wherever you choose to study, student halls are a popular choice for first years, offering a great way to meet people and ease into independent living.

Guaranteed accommodation

At DMU, we make that transition as smooth as possible. We guarantee accommodation* for all new students in one of our seven halls of residence, all within walking distance of our city-centre campus.

Types of accommodations

Our halls vary in size and style, with flats ranging from three to ten bedrooms. All are self-catered with shared kitchens, and many rooms come with en-suite bathrooms, high-speed internet, and access to communal social areas or on-site gyms. We also offer single-sex flats and the chance to choose your exact room.

Across the board, security and wellbeing are key. Whether it's on-site staff, CCTV, or secure entry systems, student safety is always a top priority. That's something to look for wherever you apply and something we take seriously at DMU.

Booking your place

Once you've made your firm choice, booking a room at DMU is quick and easy with our online system. It typically opens in March for September arrivals and operates on a first-come, first-served basis. Our friendly accommodation team is on hand to help every step of the way.

Our standards

Like many reputable universities, DMU follows the Universities UK student accommodation code of practice. Our privately managed halls are also accredited by the National Code, so you can expect high standards and a professional service.

* Subject to terms and conditions. Visit dmu.ac.uk/accommodation-guarantee for further details.

Guaranteed accommodation

Accommodation name	Contract length	2025/26 cost*	Annual rate
Bede Hall	41 weeks and one day	£95 per week	£3,908.57
Castle Court	43 weeks	£139 - £155 per week	£5,977 - £6,665
The Glassworks	43 weeks	£161 per week	£6,923
Liberty Park	43 weeks	£137 per week	£5,891
New Wharf	41 weeks and one day	£115 per week	£4,731.43
Newarke Point	43 weeks	£145 per week	£6,235
The Grange	43 weeks	£132.30 per week	£5,688.90

Booking through DMU is the recommended option as the cost of internet, utility bills (electricity and water) and contents insurance are all included in the price so you don't need to worry about those.

If you require any further assistance, please contact the accommodation team directly at: accommodation@dmu.ac.uk

* Halls and guideline prices are from 2025/26 entry and are correct at the time of going to print. The prices listed are an indicator, and the 2026/27 entry fees are subject to change, so please check our website for the latest information.



Bede Hall



Castle Court



Liberty Park



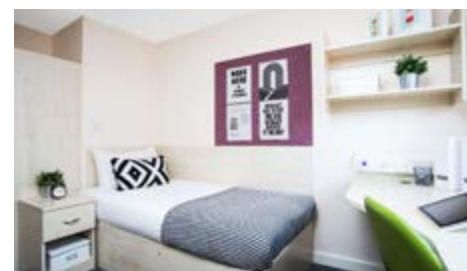
Newarke Point



The Glassworks



New Wharf



The Grange



Scan to see information about DMU accommodation.



Parents and carers – Help make the right choice

We know how it goes. One minute they're stressing over GCSEs, the next they're talking about uni, courses, cities, and careers. It's exciting, but it's a lot. For them and for you.

As a parent, carer or guardian, your support matters more than ever right now. Whether you're helping with big decisions or just being there through the ups and downs, you're playing a key role in what comes next.

At DMU, we recognise that university isn't just a big step for applicants, it's a big moment for families too. And we're here to help you feel confident in the choices ahead.

This guide has been designed to give you just what you need:

- A clearer picture of what the university application journey looks like
- How to finance a degree

- Straightforward ways to support your young person whether its choosing the right course for them or accommodation.

Want to know more?

Our team is always happy to chat – no question too small. Just call us on +44 (0)116 2 50 60 70, or email us if you'd prefer.

Better yet, join us at one of our Open Days. They're a great way for both of you to get a feel for what's ahead. Parents can attend dedicated talks,

meet current students and staff, and ask the questions that matter most to you.

Because when you feel informed and reassured, they will too.



Register to get more information for parents and carers



Clearing

What is Clearing?

Clearing is a UCAS admission process starting in July where students get a chance to apply for courses which still have available places.

How is it different from the standard UCAS application?

When you apply by the UCAS January deadline, you get to pick five courses you want to apply for. If you don't manage to secure any offers, or you've changed your mind about what or where you want to study, you can make an additional application using UCAS Extra between February and July.

Clearing opens in July, and it's designed for students who don't hold any offers, have changed their minds, or didn't meet the conditions of their original choices. Clearing becomes especially important after exam results day, when students may need to explore new options quickly.

Results Day is the day when students receive their final grades for qualifications like A-levels, BTECs, or other school-leaving exams. It's especially important because university offers are confirmed based on these results.

Who can apply through Clearing?

Clearing is your chance to pause, rethink, and make a confident choice that works for you. Whether your plans have changed or you're starting fresh, here are just a few situations where Clearing would be a great option for you:

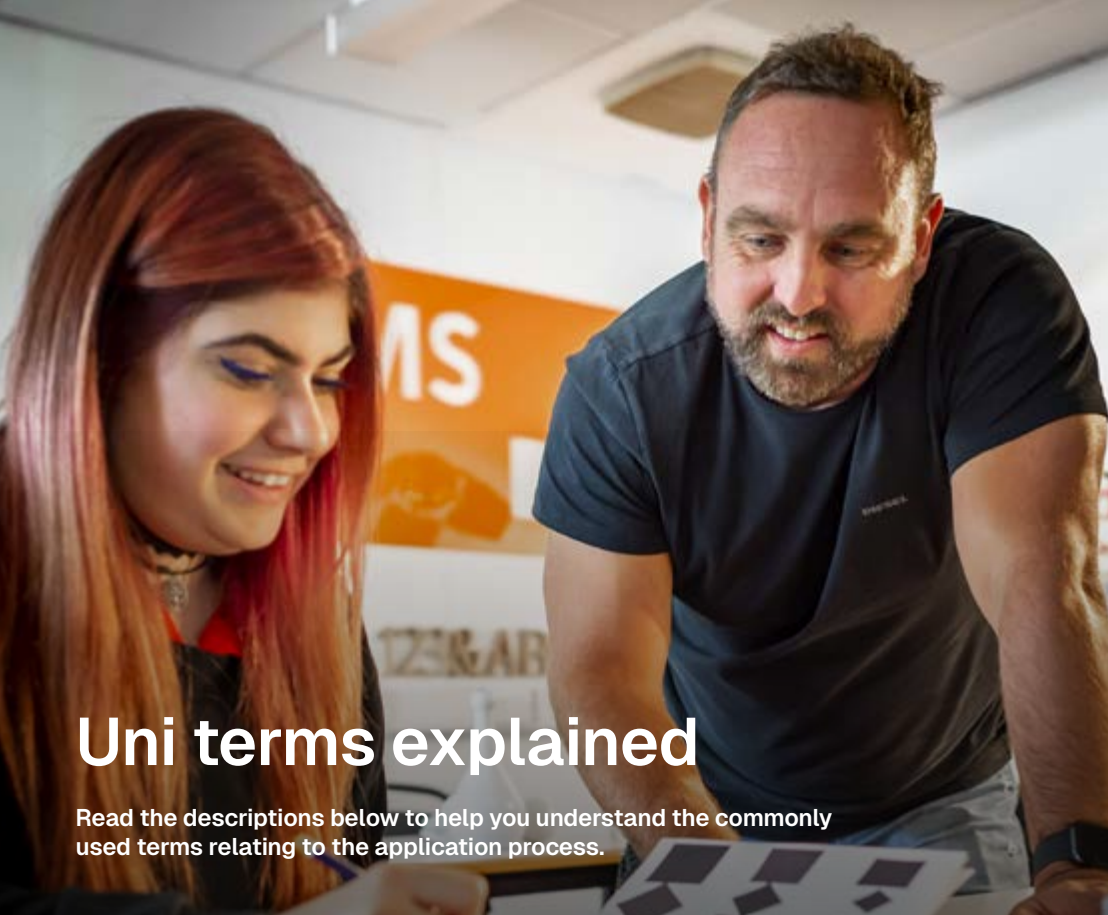
- You haven't applied yet
- Changed your mind
- Exploring all your options

What is UCAS Extra?

This service is for students who have used all five choices on their UCAS application and have either been unsuccessful or wish to change their chosen courses/universities. This runs from February until July, and students can make one application at a time.



Visit our Clearing page for more information



Uni terms explained

Read the descriptions below to help you understand the commonly used terms relating to the application process.

Firm - This is the first-choice university and course.

Insurance - This is the second choice university and course.

Decline - Any other offers that have not been selected as firm or insurance choice will have to be declined.

Defer - If you'd like to take a year out (gap year) before starting university, you can request from the university to defer your offer for one year. However, they must approve the deferral, so reach out as soon as possible to discuss.

Conditional offer - An offer made to an applicant by a university or college, whereby the applicant must fulfil certain criteria before being accepted to study on the chosen course.

Unconditional offer - An offer given to a student by a university or college, whereby the applicant has satisfied the criteria and can attend the course.

UCAS tariff points breakdown

UCAS Points	A Level	BTEC Certificate	BTEC Extended Certificate	BTEC Diploma	BTEC Extended Diploma	T-Levels	Access to HE
168					D*D*D*	Distinction*	
160					D*D*D		
152					D*DD		
144	AAB				DDD	Distinction	45 Distinction
128	ABB				DDM		
120	BBB					Merit	
112	BBC			D*D*	DMM		
104	BCC			D*D			
96	CCC			DD	MMM	Pass*	45 Merits
80	CDD			DM	MMP		
72						Pass*	
64				MM	MPP		
56	A*		Distinction*				
48	A		Distinction	MP	PPP		45 Passes
40	B						
32	C		Merit	PP			
28		Distinction*					
24	D	Distinction					
16	E	Merit	Pass				
8		Pass					

Your journey to DMU

Autumn (September – November)

- UCAS applications open
- Open Days at DMU are a great chance to explore the campus and meet staff and students
- Start preparing your personal statement and researching courses

- Application deadline for most UCAS applications (mid January)
- Some interviews, auditions or assessments may begin for specific courses
- Submit any supporting documents if requested

Winter (December – January)

Spring (February – April)

- UCAS Extra opens, another chance to apply if you used all five choices and aren't holding any offers
- Continue attending applicant events or offer holder days
- Student finance applications open, apply early to ensure your funding is in place for the start of term

- Join us at an Open Day to explore campus and meet staff and students
- Reply to offers (firm and insurance choices) by the UCAS deadline
- Results day (typically in August) – UCAS Hub updates with confirmed places
- Clearing opens, another chance to apply if you haven't submitted already, or haven't secured firm choice/wanting to change your mind
- Start arranging accommodation and get ready for enrolment

Summer (May – August)



Meet us at our upcoming
open days here.



@dmuleicester



@dmuleicester



@dmuleicester



De Montfort University



De Montfort University



+44 7970 655 800

De Montfort University
The Gateway
Leicester, LE1 9BH
UK

T: +44 (0) 116 250 6070

E: enquiry@dmu.ac.uk

W: dmu.ac.uk