

CULTURAL EXCHANGES

23-27 FEBRUARY
FESTIVAL 2015

FEATURING:

Dame Carol Ann Duffy
Claire Bloom
David Kynaston
Doc Brown

Cultural eXchanges is generously
supported by Unite Students

UNITE
STUDENTS

Box Office (0116) 250 6229
dmu.ac.uk/culturalexchanges

WELCOME TO THE 14TH CULTURAL EXCHANGES FESTIVAL 2015



One of the pleasures of hosting the Cultural eXchanges Festival is the opportunity it gives us to welcome through our doors people who might not normally have a reason to visit a university. Many of this year's wonderful events are entirely free and so I hope very much that many will take up the invitation.

We enjoy working year round with generous and inspiring partners across the City and so I am particularly pleased that we are mounting events at Curve, Phoenix Square and New Walk Museum this year and we look forward to adding to the vibrancy and energy that Leicester is so good at creating.

So whether it's the poet laureate, Carol Ann Duffy, iconic actress Claire Bloom, or a discussion about the TV programme Make Leicester British that catches your eye, I am sure there's something here for everyone. You are all welcome to the 14th Cultural eXchanges Festival – I look forward to seeing you there.

Barbara Matthews

Barbara Matthews

Pro Vice Chancellor/Dean for the Faculty of Art, Design and Humanities

**UNITE
STUDENTS**

Unite Students' involvement with the festival

Cultural eXchanges is proud to announce our continuing partnership for 2015 with Unite Students accommodation. The group has continued to provide support and guidance throughout the planning process and we look forward to continuing to build this relationship in future years. Please look out for more information about Unite Students throughout the festival.

BARODA EXHIBITION

All Week, Trinity House

Exploring the potential of cultural exchange in the Gujarat area of India has led to links between Fine Art (DMU) and a number of institutes in the region, notably the Faculty of Fine Arts at Maharaja Sayajirao, University of Baroda. This extraordinary exhibition of work stems from the resulting artist residencies and is curated by Jamie Scott (DMU).

ISHI KHAN JACKSON

'Laughter Therapy' Workshop

12–12.45pm, PACE 2

£2 or FREE with ticket for the evening show

Expect sparks of creativity, sprinklings of resilience, and an injection of confidence, motivation and fun filled laughter following this empowering and interactive session.

LUKE FRANKS

2–3pm, Clephan 0.01

FREE

Luke Franks is the online presenter of The X Factor, bringing exclusive backstage coverage of the hit ITV show. Winner of the Sony DAB Rising Star Award 2012, he also presents The Hits Radio Weekend and ITV's Scrambled as well as regularly hosting pop music showcases. Join him and discover what it takes to be a presenter across TV, radio and online.

THE CONDITION OF THE WORKING CLASS

3–5pm, Clephan 3.01

FREE

'The Condition of the Working Class': a screening of a film by Deirdre O'Neill (Inside Film) and Mike Wayne (Professor in Screen Media at Brunel University) about a theatrical production based on working-class experience in Salford followed by a Q&A session.



Luke Franks

MICHAEL PARASKOS

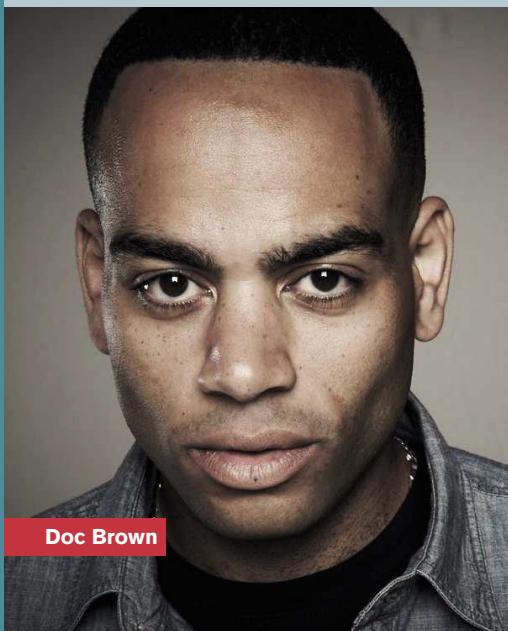
**Mise en Abyme: Anarchism,
Art and Theology**
4–5pm, Clephan 3.03
FREE

Roland Barthes suggested images could be read like written texts conveying messages. But into his theory he also threw the concept of *mise en abyme*. Using ideas that combine aspects of anarchist cultural theory and Greek Orthodox theology Dr Michael Paraskos argues that mise en abyme is the most essential element in the creation of art.

DOC BROWN 'IN CONVERSATION...'

5–6pm, Clephan 2.13
£4 (£3 conc)

Doc Brown is a man in demand. Currently co-starring in ITV's Law and Order, as a musician and rapper he has performed with the likes of Mark Ronson, Amy Winehouse, The Kaiser Chiefs and Lily Allen as well as launched the career of influential rapper Lowkey. As a comedian he has toured with Ricky Gervais and is also the writer of BAFTA winning BBC TV series The Four O'Clock Club. Doc Brown takes time out from his stand-up comedy tour to talk about his multi-faceted career.

**Doc Brown****INTERMEDIAL PERFORMANCE**

6.30–7.30pm, Trinity House
FREE

This exciting double-bill features the following two works:

Quicksilver (2014) is a composition for dancer, cello, Kyma and projection technology performed by Craig Vear, Sally Doughty and Audrey Riley (DMU). This is followed by long-term collaborators Simon Atkinson and Kerry Franksen (DMU) who showcase a new 'live-digital' performance.

**Ishi Khan Jackson****ISHI KHAN JACKSON**

'I am Happy'
6.30–7.30pm, PACE 1
£6 (£3 conc)

Join Ishi (Funny Women's best show award nominee) as she dances her way through a journey to happiness from Zambia to the UK. In this critically acclaimed comedy show she reveals her rich cultural heritage, especially her love of Birmingham, Biryani and Lady Gaga. The show includes support acts from the best emerging talents from DMU's comedy society.

ART AUCTION

7pm–onwards, Campus Centre, floor 2

The annual Fine Art Auction is your chance to bid on talented students' original artwork in view of raising funds for their upcoming degree show & catalogue. Artwork can be viewed via virtual gallery and requests to bid can be made by email.

E: fine.art.committee@gmail.com

W: fineartauction.moonfruit.com

**RICHARD III'S BRIDE VISITS DMU:
AN EVENING WITH CLAIRE BLOOM**

7–8pm, Clephan 2.13
£4 (£3 conc)

Legendary star of stage and screen, Claire Bloom, is our honoured guest at this year's Cultural eXchanges. She famously played the Lady Anne opposite Lawrence Olivier in his film *Richard III* (1955), but Olivier is but one of the celebrated actors with whom she has starred: Charlie Chaplin (*Limelight*), Richard Burton (*Hamlet*, *Look Back in Anger*), Paul Newman (*The Outrage*) and many more. She returned to royal duties as Queen Mary of Teck in *The King's Speech*. She has received unreserved praise from authors and critics alike, such as Kenneth Tynan who declared her 'the best Juliet I've ever seen'. To mark the fifth birthday of DMU's Cinema and Television History (CATH) Research Centre, its Director, Professor Steve Chibnall, and drama specialist, Dr. Alissa Clarke, talk to Miss Bloom about her illustrious career.

**Claire Bloom**

Photo Credit: Steve Chibnall Archive

AMANDA COE

Biopic Adaptions

10am (Conference – £50), 4pm (Talk)

Trinity House

BAFTA award-winning Amanda Coe is a screenwriter whose works include *Room at the Top* (2012), *Margot* (2009), *Shameless* (2005-7), *Elizabeth David: A Life in Recipes* (2006) and most recently a 3-part serial on the Bloomsbury Group, *Life in Squares*.

She discusses her work with Deborah Cartmell and Hila Shachar (DMU) at the conclusion of DMU's Centre for Adaptation's conference, 'Biopic Adaptations'.

Booking for the conference is at dmu.ac.uk. For those just wishing to attend Amanda Coe's talk, tickets are available at £4.00 (£3.00 conc), via the Cultural eXchanges Box Office.

INSPIRING CREATIVITY AND ENTERPRISE (ICE)

11–4pm, Clephan Building, floor 3

Free

Find out more about kick-starting your career in the creative sector or becoming self-employed. Speak directly to organisations in the exhibition area to learn about getting a job in the creative sector or starting your own business. Throughout the day there are a range of workshop sessions to give you an insight into the industry and assist you on your start-up journey. For more information or to book your place at a workshop please visit dmu.ac.uk/ice

SEB EMINA

The Breakfast Bible

12–1pm, Clephan 0.01

FREE

Seb Emina published 'The Breakfast Bible' in 2013, based on the blog The London Review of Breakfasts. It received widespread critical acclaim and was shortlisted for Food Book of the Year in the Guild of Food Writers Awards. He is joined by Maurice Maguire (DMU) to talk about this literary transition, best of eggs and other morning delights.

POSTGRADUATE CREATIVE WRITING SHOWCASE

2–3pm, Clephan 2.29

FREE

Enjoy readings of poems, extracts from novels and pieces of short fiction by postgraduates on the Creative Writing course at DMU. A chance to spot potential prize-winning writers of the future.

ADRIAN MOLE: FROM PAGE TO STAGE

2–3pm, Curve Theatre, Seminar Room A

FREE

Executive Producer Chris Stafford and members of the creative team, Jake Brunger (Book and Lyrics) and Pippa Cleary (Music and Lyrics), raise the curtain for an exclusive look at their creative journey in taking Sue Townsend's much loved teenager from page to stage. This promises to be a fascinating insight into the process involved in producing a brand new musical.

NB Booking is via Curve Telephone Sales: (0116) 242 3595

curveonline.co.uk

CURVE
A CURVE PRODUCTION

SUE TOWNSEND'S
The Secret Diary Of

ADRIAN MOLE AGED 13¾

the Musical

BOOK & LYRICS JAKE BRUNGER MUSIC & LYRICS PIPPA CLEARY
DIRECTED BY LUKE SHEPPARD

SAT 7 MAR - SAT 4 APR

TICKETS 0116 242 3595
WWW.CURVEONLINE.CO.UK

CURVE THEATRE, LEICESTER

ARTS COUNCIL ENGLAND

CURVE

Adrian Mole

PROFESSOR STUART PRICE

Violence, Knowledge and Repetition: the state and its operatives in contemporary Cinema

3–4.30pm, Clephan 2.13

FREE



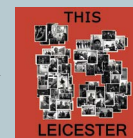
This talk compares two cinematic tendencies: the manufacture of narratives that contain 'interchangeable' elements, and the existence of a sub-genre in which the protagonist has repeatedly to inhabit the same temporal 'space' in order to achieve a particular goal.

JEREMY WELLER

This IS Leicester – a drama in progress!

5.30–7pm, PACE 1

FREE



Internationally renowned theatre and film director Jeremy Weller, shares his view of this extraordinary 21st Century City, where his new short film, This Is Leicester, will be premiered along with some very special, and perhaps unexpected live performances! This is the first phase of a much anticipated large-scale community theatre project to premier in Leicester in 2016. (The project is funded by Leicester City Council and the Arts Patrons Trust and supported by DMU).

PHIL BEADLE

6–7pm, Clephan 3.01

FREE

Inspirational speaker Phil Beadle has a history of achieving transformational results with students from schools in working class areas. A former teacher of the year, he has appeared on a number of TV programmes including Channel 4's 'Unteachables' and his acclaimed book 'How to Teach' was awarded 10/10 by the Times Educational Supplement. His talk is a must for all teachers and educationalists.

SEVENWONDERS

Launch and Talk by Anthony D'Offay

6–7pm, New Walk Museum

FREE

Sevenwonders global art project hosted by DMU's Fine Art and Photography Research Group is launched at New Walk Museum. Invited contributors will post a list of their 7 most wonderful examples from culture and nature, those things that enrich their lives and which would be a pleasure to share. Join renowned art collector Anthony D'Offay as he shares his seven wonders with the audience.

THE COMPANY EXPERIENTIAL PRESENT: 'BRIDGING THE VOID'

7–7.40pm, PACE 2

£4 (£3 conc)



Film, dance and music interlace to create an immersive and mesmerising sunrise experience inspired by the Native American saying 'Every Night is followed by Sunrise'. The performance unfolds around the audience, who are invited to wander, encounter and react to the production as it develops. (NB. The performance is followed by a post-show talk).

CAROL ANN DUFFY

Poetry Reading

7.30–8.30pm, Clephan 2.13

£7 (£5 conc)

Cultural eXchanges has great pleasure in presenting a poetry reading by Dame Carol Ann Duffy. Duffy's prizewinning poetry for adults and children spans 30 years. She is Poet Laureate and directs the Writing School at Manchester Metropolitan University.

'The effortless virtuosity, drama and humanity of Carol Ann Duffy's verse have made her our most admired contemporary poet'
(Times, 2009).



Carol Ann Duffy

ANNETTE VANDE GORNE

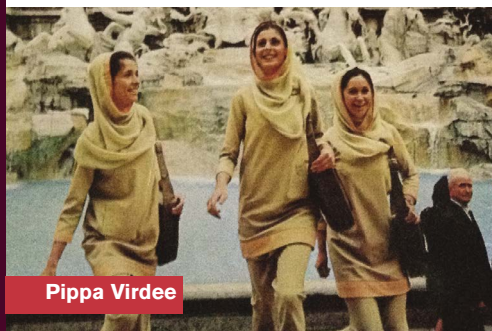
Talk
1–2pm PACE 1
FREE

Annette Vande Gorne, one of Belgium's leading composers, has been Professor of electroacoustic composition at the Royal Conservatories in Liège, Brussels and Mons. She founded the *Musiques & Recherches* and the *Métamorphoses d'Orphée studios* (Ohain). She also founded the festival and performance competition *L'Espace du son* (Brussels) and the composition competition *Métamorphoses*. Here she gives an illustrated talk about her practice.

DR PIPPA VIRDEE

'Great People to Fly with': Emergence of women in Modern Pakistan
1–2pm, Clephan 3.01
FREE

This talk by Dr Pippa Virdee (DMU) attempts to understand the transformation of women in public spaces in Pakistan through the illustration of Pakistan International Airlines' adverts. By speaking to the women who worked for PIA, the historian can get a fascinating insight into the social cultural landscape of women in public spaces during the formative years of Pakistan's history.



JOHN LANCASTER AND

KHUSH NUBIAN
2–3.30pm, Clephan 0.01
FREE

Artists John Lancaster and Khush Nubian give a talk about their experiences as part of the international exchange between DMU and the Faculty of Fine Arts at Maharaja Sayajirao, University of Baroda.

A TRIBUTE TO GRAHAM JOYCE

2–3pm, Clephan 2.29
FREE

Leicester Centre for Creative Writing invites you to celebrate the life and work of a local legend, the novelist Graham Joyce. Graham produced a unique body of award winning fiction that straddles the genres of fantasy, horror, sci-fi, speculative fiction and football. Come and hear friends, colleagues and admirers talk about this extraordinary body of work, and the man behind it.

LEICESTER ARTS FESTIVALS PANEL

4–5.30pm, Clephan 3.01
FREE

Following Derry/Londonderry's successful tenure as UK City of Culture 2013 Shona McCarthy, CEO of their Culture Company 2013, joins members of Leicester Arts Festivals (LAF) to discuss how cities might best harness the benefits of winning this prestigious title. Chair: Simon Brown (Culture Co-ordinator, Leicester City Council).



PETER HUGHES

6–7pm, Clephan 0.01
FREE

Leicester Centre for Creative Writing welcomes poet and painter Peter Hughes to Cultural eXchanges. Salt published his *Selected Poems* in 2003, and since then we have been blessed with such excellent collections as *Allotment Architecture* (2013) and *The Summer of Agios Dimitrios* (2009). *Quite Frankly*, his fabulous adaptations of Petrarch, will appear in 2015. Peter is also the editor of the award winning Oystercatcher Press.

ANNETTE VANDE GORNE

Concerts
7–8.10pm, 8.30–9.30pm, PACE 1
£4 (£3 conc)

The evening's programme features two concerts of work by this leading Belgian composer – one performed by Annette Vande Gorne herself, followed by a programme of performances by UK based colleagues and former students.

1 TOO 3 VIDEO

10am–6pm
Clephan 0.17
FREE

1 too 3 showcases moving image work from across the DMU campus. All work is suitable for a family audience and is looped to run for one-hour duration so you can dip in and out throughout your visit.



DEMON CREW

11am–1pm, Clephan 2.29
FREE

DMU Creative Writing undergraduates join Cultural eXchanges at the end of their course to talk about and read from their current work. A chance to meet famous writers of tomorrow as they begin their exciting careers.

POP UP PLAY – SYMPOSIUM

11am–1pm, Hugh Aston 0.10
2–4.30pm, PACE 2
FREE

Explore how immersive digital technology can be used to create learning opportunities for children and young people, in order to enhance their creativity, language and communication skills. This research is a joint project between The Spark Arts for Children, DMU and Dotlib Ltd. and is funded by the Digital R&D Fund for the Arts. More information and booking at thesparkarts.co.uk/popupplay

CREATIVE LEICESTERSHIRE IN A DAY

11.30am–5.40pm, Clephan 2.30
FREE

Come and experience what Creative Leicestershire has to offer all in a day. Book for one – to – one business advice and professional development planning sessions, take part in workshops on marketing and selling your work. Then join us for a glass of wine and experience the fast moving and fun PechaKucha event. Go to creativeleicestershire.org.uk to find out more.

THE MONOCHROME SPY

3–5pm, Phoenix Square Digital and Media Centre
FREE

A comedy-thriller set in 1964 – 'the golden age' of British cult TV – *The Monochrome Spy* is the debut film by Paul Gosling – a graduate of DMU. Filmed entirely in Leicester and with local actors it follows the exploits of TV spy Guy Boulton who is recruited by the CIA to act as a real secret agent. The screening is followed by a panel discussion of cult 60s TV with Paul, Tim Beddows (Network Distributing) and Dick Fiddy (BFI).

Phoenix



The Monochrome Spy

ARTS IN PRISONS: A WRITER-IN-RESIDENCE

3–4pm, Clephan 0.01
FREE

This event facilitated by Jacqui Norton (DMU) and Dr Victoria Knight (DMU) presents an opportunity to gain an understanding of the role of a 'writer-in-residence' in a prison. Alistair Fruish has worked in over 30 prisons in the UK and shares some of his experiences as an artist working in this environment. There is also an opportunity to engage with some of the work he has co-produced with prisoners over the last few years. The talk is followed by a Q&A.

'THAT'S WHAT THEY SAID'

3–5pm, Trinity House
FREE

Drawing on a range of women's voices, this event brings together verbatim theatre, invited speakers, including Laura Bates (Everyday Sexism Project) and panel discussion in order to explore current debates about everyday sexism, sexual harassment and the experiences of women in contemporary British culture. The event is organised by final year students from Drama Studies.

PERSPECTIVES ON DANCE: A PANEL DISCUSSION

4–5.30pm, Clephan 2.13

FREE

Four innovative British dance artists discuss current dance practices drawing on their own work and their views on the contemporary situation. The panel consists of Fergus Early OBE (Green Candle Dance Company), Jacky Lansley (Dance Research Studio), Roberta Jean (mysteryskin) and Joe Moran (Dance Art Foundation). Expect a lively and inspirational exchange of ideas.

THE LEICESTER PRINT WORKSHOP/DMU FINE ART LECTURE

Clunie Reid
5–6pm, Clephan 3.01
FREE



Clunie Reid exhibits both nationally and internationally including Tate Britain, the Saatchi Gallery and New Museum, New York. Her practice is concerned with how digital media affects our perception and understanding of imagery. Clunie often uses collage to lift the lid on consumer and celebrity culture and her talk promises a valuable insight into the work of one of the UK's outstanding artists.

'AUTOBIOGRAPHY, MEMORY, CREATIVITY: IN CONVERSATION WITH EVA HOFFMAN'

5–6pm, Clephan 0.01
FREE

In what ways is autobiography a creative act which unsettles clear-cut distinctions between fiction and non-fiction? Eva Hoffman talks with Andy Mousley from DMU about her autobiography *Lost in Translation* alongside her other work and the relationship between memory, history, creativity, exile and identity.

DAVID KYNASTON 'IN CONVERSATION...'

6–7pm, Clephan 3.03
FREE

David Kynaston has been a professional historian since 1973, specialising in the social history of England. He is the author of *Austerity Britain* (2007) named Book of the Decade by The Sunday Times and *Family Britain*, the first two titles in a series of books covering the history of post-war Britain. His latest volume, *Modernity Britain*, was published in 2013 to great acclaim. Here he is joined 'in conversation...' by Professor Dilwyn Porter (DMU).

MARIE FITZPATRICK

Three ones
7–7.30pm, PACE 2

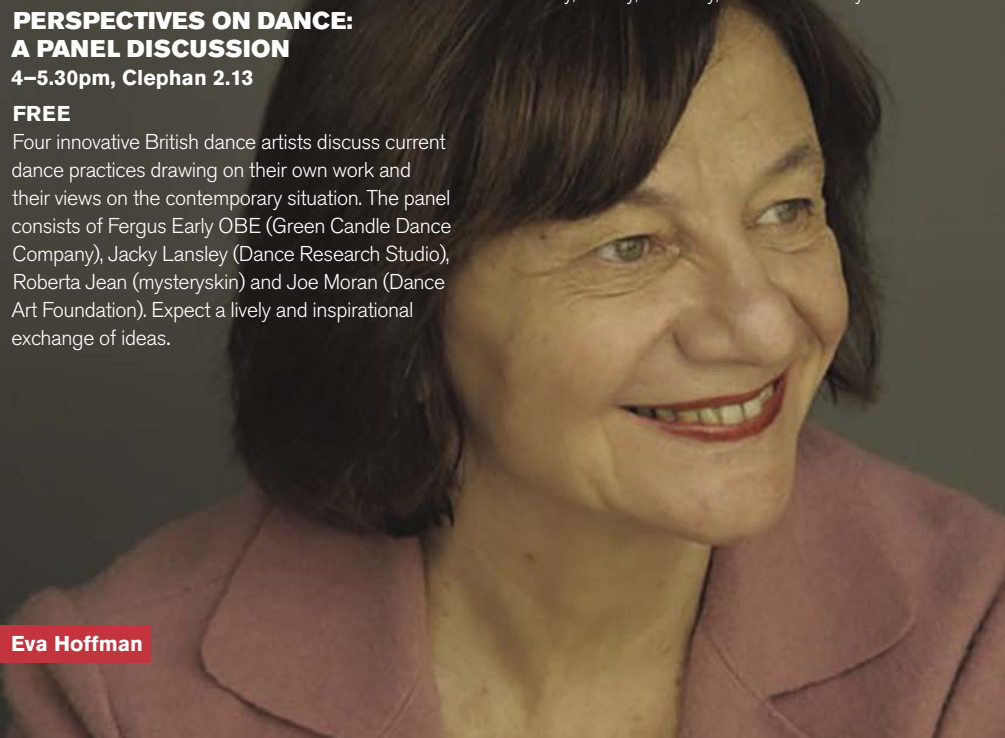
FREE

Three ones delves into ideas of space, time and memory spanning the corporeal and the imagined. The work explores alternative ways of perceiving the relationship between body and space. Using a structured score for improvisation, the dancers navigate their way through processes that deal with duration, memory, multiplicity and each other. (The performance lasts approximately 30 minutes and is followed by a post-show discussion).

PHILIP MEAD

Piano Recital
7.30–8.30pm, PACE 1
£4 (£3 conc)

Philip Mead is one of Britain's foremost interpreters of contemporary piano music, and has commissioned and premiered a vast number of works in the last thirty five years. He is a Research Fellow at the University of Hertfordshire and founder and artistic director of the British Contemporary Piano Competition, held every three years since 1988.



Eva Hoffman



Marie Fitzpatrick

Rosemary Squire

1 TOO 3
10am–4pm
(See Thursday 26 February for details)

ROSEMARY SQUIRE

'In Conversation...'
1–2pm, Clephan 0.01
FREE

Ranked top of this year's The Stage 100 list of the most powerful people in theatre, Rosemary Squire OBE is co-founder and joint CEO of Ambassador Theatre Group, the world's number one live-theatre company. She is the most prominent woman in British theatre of the modern era and made history as the first woman named UK Entrepreneur of the Year 2014. Here she is in conversation with Barbara Matthews, Dean of Art, Design and Humanities (DMU).

STEVE SIDWELL
'IN CONVERSATION...'
1–2pm, Clephan 3.03
FREE

Renowned arranger and composer, Steve Sidwell is credited on numerous albums (Robbie Williams, Dame Shirley Bassey), advertising campaigns and films and featured on television shows (XFactor), with his distinctive and innovative orchestrations and compositions. Theatre credits include We Will Rock You, Made in Dagenham and Beautiful. Steve is in conversation with Jacqui Norton (DMU) about his illustrious career.

Steve Sidwell

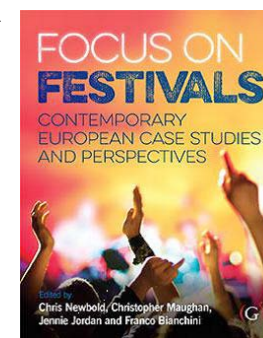
CULTURAL WORKERS,
GENDER AND AUSTERITY
2–3pm, Clephan 3.01
FREE

MEDIA
DISCOURSE
GROUP

This event is based on recent work carried out by two academics, Joanna Figiel and Stephen Shukaitis from the Journal Autonomedia, who wish to draw public attention to the problems created by the imposition of 'austerity' as an economic regime.

FOCUS ON FESTIVALS
3–5pm, Hugh Aston Building 0.10
and Hugh Aston Atrium
FREE

Join Kathrin Deventer (Secretary General; The European Festivals Association) and other guests for 'the future of European festivals' panel discussion and the launch of *Focus on Festivals*, a groundbreaking new book exploring the social, cultural, political and management aspects of this ubiquitous cultural phenomenon. An opportunity to see advanced copies, meet and discuss the book with some of the authors over a glass of wine.



(Save 25% on your copy by submitting this voucher at the launch, or go to goodfellowpublishers.com and enter FOF25 when prompted at checkout to get the discount. Valid until 31 March 2015.)

JOHN HUTCHINSON
'A pictorial history of Leicester City FC'
4–5pm, Clephan 0.01
FREE

Dr Neil Carter of DMU's International Centre for Sports History and Culture is in conversation with John Hutchinson, Leicester City FC's official Historian and Archivist. They talk about John's recent book, *"From Shed to Stadium"* which tells the Club's story through its very extensive, richly varied and valuable memorabilia archive collection.

QUICK SHIFTS

4–5pm, PACE 1
£4 (£3 conc)

Adventures in improvisation led by a pioneering group of dance explorers. Sometimes beautiful, fragile and thought-provoking; sometimes boisterous, irreverent and energetic. Quick Shifts navigate the unpredictable terrain of improvised performance, asking questions, breaking new ground and excavating the endless potential of the spontaneous moment.

Quick Shifts



MAKE LEICESTER BRITISH

5–6pm, Clephan 3.03
FREE

Leicester is often portrayed as a model of multiculturalism. Channel 4's 'Make Leicester British' has recently placed this notion under the spotlight.

We are fortunate to be joined by the programme's Creative Director Kieran Smith (Love Productions) to share with us the creative process involved in the making of this much talked about documentary.



MAKE LEICESTER BRITISH



Make Leicester British

SIMON INGLIS

Football Grounds, Skateparks and Swimming Pools – is Britain's sporting heritage worth saving?
6–7pm, Clephan 0.01
FREE

For the last 35 years the author and historian Simon Inglis has been researching sporting heritage and architecture. His 'Football Grounds of Great Britain' was described in the Guardian as the best sports book of the 20th century. His most recent coup was to persuade the government to list a 1970s skatepark in Hornchurch. Here he is 'in conversation' with Professor Martin Polley (DMU), Director of the International Centre for Sports History and Culture.

HONEST DAVE PRESENTS THE IMAGE IS THE SERVANT II (FEARFUL)

8pm–12am, Hansom Hall
£5 (£3 conc)

Back by popular demand 'The Image Is The Servant II' is a collaboration between the artist Honest Dave, a talented collective of musicians, artists, dancers, poets with students from Photography & Video, Fine Art and Dance (DMU), all brave enough to risk it all for this live creative happening. Followed by sets from Indie dreampop duo SANS and Afro City Swingsters to extend the party mood.

Bar Available.

Honest Dave



Honest Dave presents

The Image Is The Servant II

(fearful)

FESTIVAL DIARY

KEY TO FESTIVAL CATEGORIES:

A Auction	F Film	T Talk
C Conference	IC In Conversation	W Workshop
D Discussion	L Launch	
E Exhibition	P Performance	

Monday 23 February

EVENT	LOCATION	TIME	CAT
Baroda Art Exhibition	Trinity House	All week	E
Ishi Khan Jackson	PACE 2	12–12.45pm	W
Luke Franks	Clephan 0.01	2–3pm	T
The Condition of the Working Class	Clephan 3.01	3–5pm	F D
Dr Michael Paraskos	Clephan 3.03	4–5pm	T
Doc Brown	Clephan 2.13	5–6pm	IC
Intermedial Performance	Trinity House	6.30–7.30pm	P
Ishi Khan Jackson	PACE 1	6.30–7.30pm	P
Claire Bloom	Clephan 2.13	7–8pm	IC
Art Auction	Campus Centre, 2nd floor	7–9pm	A

Tuesday 24 February

EVENT	LOCATION	TIME	CAT
Biopic Adaptations	Trinity House	9.30am–6pm	C
ICE Event	Clephan 3.03	11am–4pm	D W T
Seb Emina	Clephan 0.01	12–1pm	IC
Creative Writing Postgraduates	Clephan 0.01	2–3pm	P
Adrian Mole	Curve Theater Seminar Room A	3–4.30pm	IC
Professor Stuart Price	Clephan 2.13	2–3.30pm	T
Amanda Coe	Trinity House	4–5pm	T
Jeremy Weller	PACE 1	5.30–7pm	F P
Phil Beadle	Clephan 3.01	6–7pm	T
Sevenwonders – Anthony D’Offay	New Walk Museum	6–7pm	T
Bridging the Void	PACE 2	7–7.40pm	D P
Dame Carol Ann Duffy	Clephan 2.13	7.30–8.30pm	P

Wednesday 25 February

EVENT	LOCATION	TIME	CAT
Annette Vande Gorne	PACE 1	1–2pm	T W
Pippa Virdee	Clephan 3.01	1–2pm	T
John Lancaster and Kush Nubian	Clephan 0.01	2–3.30pm	T
A Tribute to Graham Joyce	Clephan 2.29	2–3pm	D
Leicester Arts Festivals panel	Clephan 3.01	4–5pm	D
Peter Hughes Poetry Reading	Clephan 0.01	6–7pm	P
Annette Vande Gorne	PACE 1	7–8.10pm 8.30–9.30pm	P

Thursday 26 February

EVENT	LOCATION	TIME	CAT
1 too 3 Video	Clephan 0.17	10am–6pm	F
Demon Crew Creative Writing	Clephan 2.30	11am–1pm	P
Pop-Up-Play Symposium	Hugh Aston 0.10	11am–1pm	C
Creative Leicestershire in a Day	Clephan 2.29	11.30am–5.40pm	W T
Pop-Up-Play Symposium	PACE 2	2–4.30pm	C
The Monochrome Spy	Screen 2, Phoenix Sqaure Digital and Media Centre	3–5pm	F D
Arts in Prisons	Clephan 3.01	3–4pm	D
‘That’s What They Said’	Trinity Chapel	3–5pm	P
Perspectives on Dance	Clephan 2.13	4–5.30pm	D
Clunie Reid	Clephan 3.01	5–6pm	T
Eva Hoffman	Clephan 0.01	5–6pm	IC
David Kynaston	Clephan 3.03	6–7pm	IC
Marie Fitzpatrick	PACE 2	7–7.30pm	P
Philip Mead	PACE 1	7.30–8.45pm	P

Friday 27 February

EVENT	LOCATION	TIME	CAT
1 too 3 Video	Clephan 0.17	10am–4pm	F
Rosemary Squire	Clephan 0.01	1–2pm	IC
Steve Sidwell	Clephan 3.03	1–2pm	IC
Class and Austerity	Clephan 3.01	2–4pm	T
Festivals in Focus Book Launch	Hugh Aston Building Atrium	3–5pm	L
John Hutchinson	Clephan 0.01	4–5pm	T
Quick Shifts	PACE 1	4–5pm	P
Make Leicester British	Clephan 3.03	5–6pm	D
Simon Inglis	Clephan 0.01	6–7pm	D
‘The Image is the Servant II’	Hamsom Hall Wellington St, LE16HL	8pm–12am	P

CULTURAL EXCHANGES FESTIVAL 2016

Join our email list for a special sneak preview of
next year's festival events
dmu.ac.uk/culturalexchanges

BOOKING

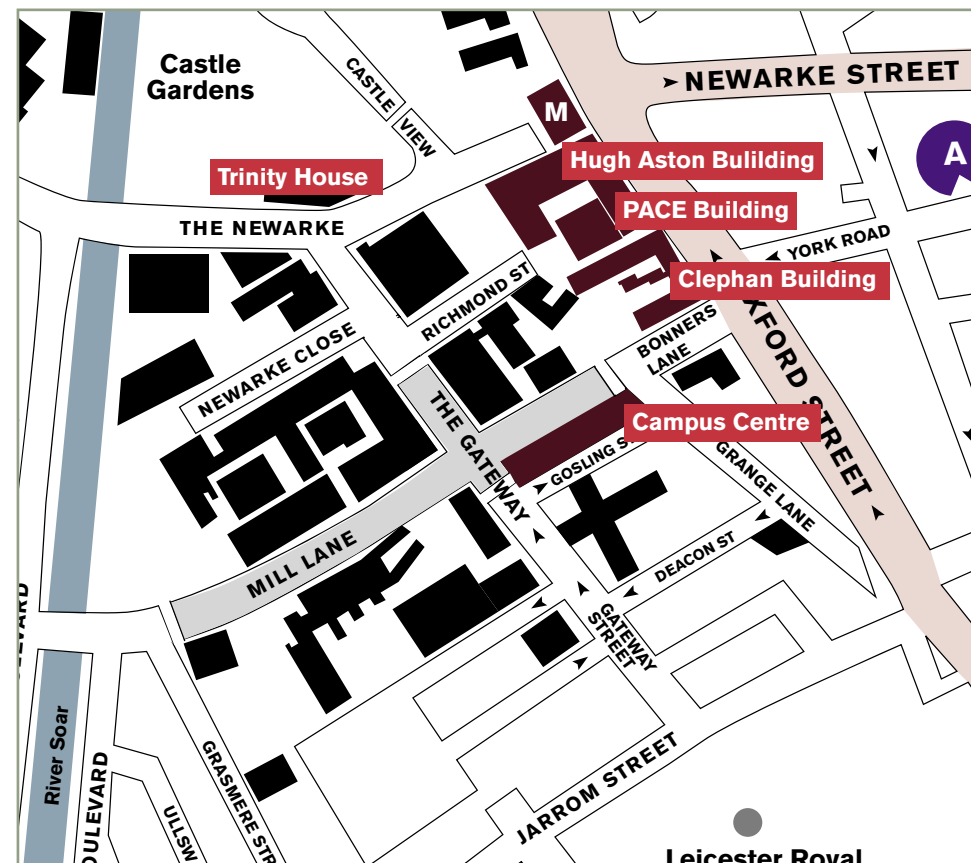
There is expected to be a high level of interest in the programme. Although most of the events are free, the only way to ensure a place is to book in advance. To do so please book online at dmu.ac.uk/culturalexchanges or ring the box office **(0116) 250 6229**.

For the first time this year we are using the TicketSource as our automated box office to secure and print tickets. Please bring your printed ticket to each event that you book online.

The programme is correct at the time of going to press and we will do everything we can to present it as shown here. But in the unlikely event that speakers/performers have to withdraw then we reserve the right to make changes as needed.

NB Please arrive at least ten minutes before the scheduled start of the event to ensure entry. In the event of a sold out performance then pre-reserved seats will be released if not claimed before that time.

HOW TO FIND US



For more information on how to find us please visit dmu.ac.uk/maps, or request an access map when you make your booking.

For SAT NAV directions the Clephan Building postcode is LE1 5XY

Parking

Car parking spaces on campus are limited. For more information on where to park please visit leicester.gov.uk/parking

Access

The Clephan Building, Campus Centre, Hugh Aston Building and PACE Building are all wheelchair accessible. Please contact the box office on **(0116) 250 6229** before the event if you require disabled parking or have any other requirements concerning access. We will do our best to accommodate you.

Acknowledgement

Cultural eXchanges is in its 14th year, and is funded by De Montfort University to promote a closer relationship between the university and the city of Leicester. It is co-ordinated by staff and students from the Festivals Management module of the Arts and Festivals Management degree course. Under the supervision of the teaching team, the students engage in an intensive planning process, administer and market the festival, and undertake the practical running of events. Without their hard work and commitment, Cultural eXchanges would not be possible.

Administration Team

Megan Kingdom-Davies, Beth Piggott, Nanlin Tan

Marketing Team

Ruby Harrison, Una McKeague, Craig Sheakey

Operations Team

Charly Downes, Nikola Dunk, Jade Leatham, Ksenija Kornejeva

Thank you to: Vice Chancellor Professor Dominic Shellard, Dean of Faculty Barbara Matthews, Rob Brannen, Professor John Young, Professor Stuart Price, Sandra Henry, Jim Popple, Abi Ledwith, Alexander Erdlenbruch, Rachael Walters, Jo Griffin, Dr Kathy Bell, Dr Simon Peril, Sally Doughty, Barry Dufour, The PACE and Campus Centre Technicians, Stewards, Timetabling staff, AV Services and all our colleagues in the Faculty of Art, Design and Humanities.

In addition Maggie Shutt and Simon Brown at the Leicester City Council Festivals and Events Unit, Geoff Rowe at Big Difference Company, Ruth Sumner (DMU) and Lucy Phillips (Leicester Print Workshop).

Special thanks to:

Festival Director – Tony Graves

Director of Operations – Maurice Maguire

Arts and Festivals Management staff – Jennie Jordan, Jacqui Norton, Chris Newbold, Chris Maughan and Richard Fletcher

Extra special thanks to Mark Barnett, Louise Hughes, Andrea Jones, Rafaela Aguiar and Johanna Bramhall.

 twitter.com/CEXchanges2015

 facebook.com/CulturalExchangesFestivalDMU

'Cultural eXchanges is generously supported by Unite Students'

**UNITE
STUDENTS**

Alternative formats

Where possible DMU publications or specific sections can be supplied in alternative media. For further information on how we can help, please contact the Enquiry Centre on 08459 45 46 47 or +44 (0)116 257 7513, enquiry@dmu.ac.uk or text phone +44 (0)116 257 7908.

LAUNCH YOUR CAREER IN ARTS & FESTIVALS



BA (Hons) Arts and Festivals Management
MSc Cultural Events Management
Further information: **Promotion and Recruitment Centre**
T: (0116) 257 7555
E: adh@dmu.ac.uk
W: dmu.ac.uk/adh

De Montfort University Bookshop

University-owned independent bookshops

*The bookshop for
students*

Book order service – we are happy to order any book you require free of charge.

In addition to books, we also stock an excellent range of stationery, greeting cards and basic computer supplies, all at competitive prices.

Accountancy • Architecture • Art • Building • Chemistry • Computing • Education Engineering • Fashion and Textiles • Foreign Language • Gender Studies • History • Human Communication • Law • Life Sciences • Literature • Management • Mathematics • Nursing and Health Studies • Performing Arts • Pharmacy • Physics • Politics • Psychology • Science and the Environment • Social Work • Social Sciences

**De Montfort University Bookshop, The Hugh Aston Building,
Richmond Street, Leicester LE2 7BQ**



UNITE
STUDENTS

UNITE STUDENTS IS PROUD TO BE SPONSORING

The Cultural Exchanges Festival



You can still find your perfect student home for next year.
Choose from a range of flats perfectly located for DMU.

Come and see our show flat today!
unite-students.com 0300 303 8653

Terms and conditions apply. Visit unite-students.com/legal-booking for full details.
Images and photography are representative of accommodation only.

