

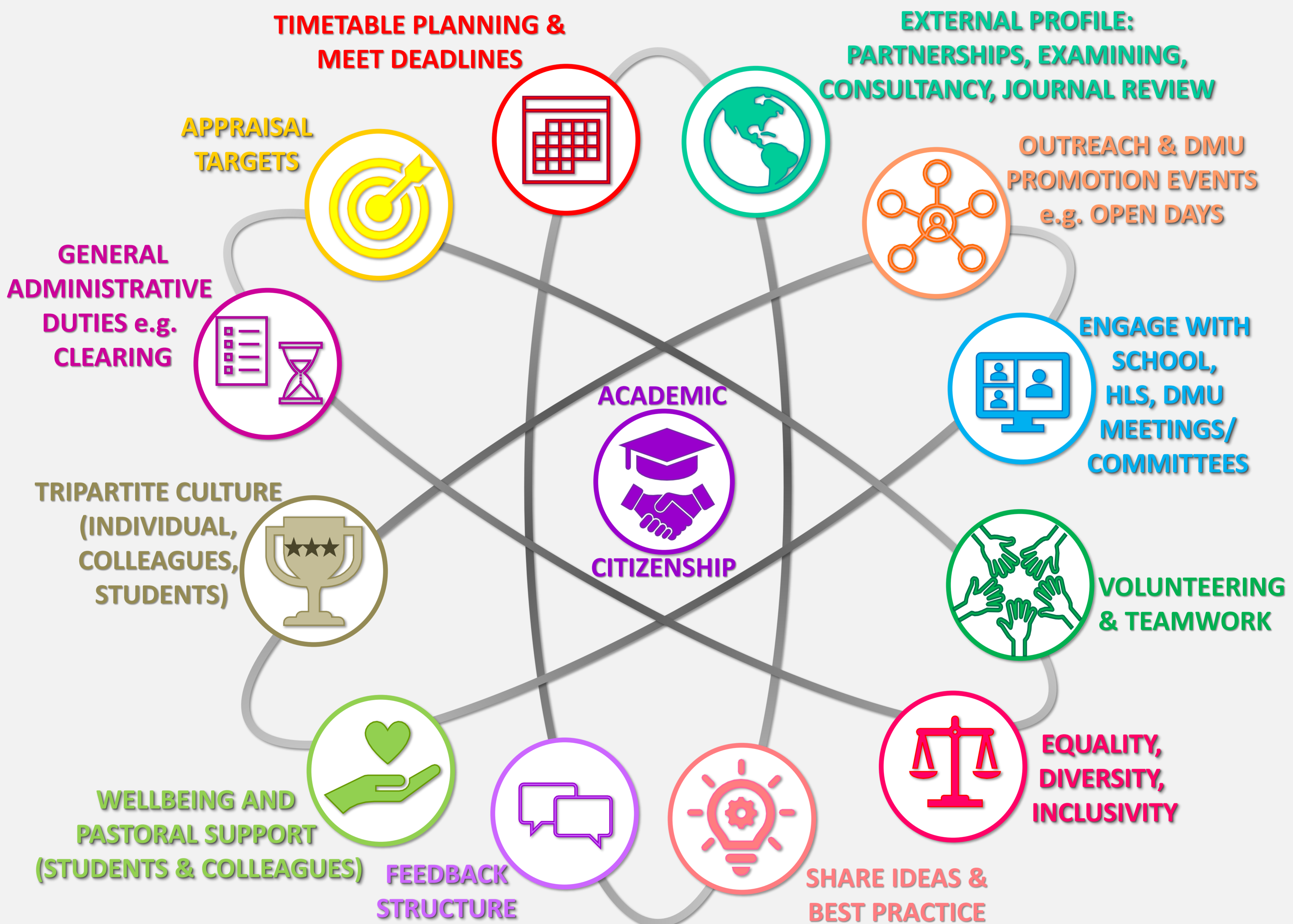
The Leicester School of Pharmacy (LSP): 'Academic Citizenship'

Leisa.Nichols-Drew@dmu.ac.uk
(Leicester School of Pharmacy
Athena Swan Self Assessment Team,
Co-Chairs: Sejal Gohil and Federico Bruccoli)

The Leicester School of Pharmacy, Hawthorn Building, Faculty of Health and Life Science, De Montfort University

Overview

Academic Citizenship (AC) is embedded within The Leicester School of Pharmacy (LSP), where it provides the foundation that underpins all of our other existing School, Faculty or Institutional commitments. It directly influences our recruitment, outreach, external engagements, administrative duties, personal tutoring, regular meeting attendance and making informed contributions, volunteering, and is an outlet for support (mentoring, coaching, training, and overall wellbeing). Furthermore, this has enabled us to proactively face the challenges of the Covid-19 response together, via the planning, coordinating and facilitation of clearing, timetable responses, and the communication of the no detriment policy, amongst other demands. Additionally, constructive outputs have included timetabled sessions for: Wellbeing, Remote Buddies (support for teaching in the new academic year) and Return to Campus updates. Here, we will present our novel AC vision, where we will make recommendations for it to be translated across the Faculty of Health and Life Science, as we deem that it is of the utmost paramount importance, within a transitioning higher education sector, so much so, that we view it as a key appraisal objective. Ultimately, Academic Citizenship is integral to the LSP ethos, where we advocate a tripartite culture that embraces a strong collegiate approach, to benefit all of us, as individuals, our colleagues, and our students.



Summary

- Academic Citizenship is at the core of The Leicester School of Pharmacy
- It is an integral part of our culture and ethos
- The LSP Covid-19 response was enhanced because of our Academic Citizenship

Recommendations

- All Schools within Faculty of HLS embed Academic Citizenship
- DMU Institutional Academic Citizenship Criteria and Expectations

